



# IMEN TIAR

I . T . E

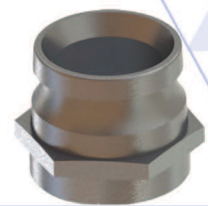
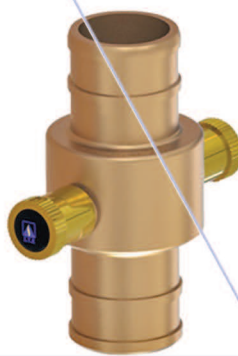
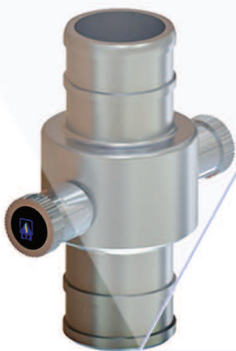
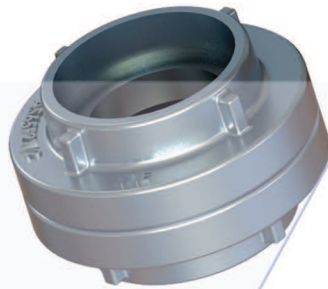
Engineering Co.

WITH IMEN TIAR

THERE IS NO CHANCE FOR FIRE

## Fire Fitting Equipment

Rev. A





# IMEN TIAR

I . T . E

Engineering Co.

WITH IMEN TIAR

THERE IS NO CHANCE FOR FIRE

## IMEN TIAR FITTINGS CATALOGUE

### STORZ EQUIPMENT

STORZ ADAPTER  
WITH FEMALE THREAD  
(FORGING)



STORZ ADAPTER  
WITH MALE THREAD  
(FORGING)



STORZ ADAPTER  
TO FLANGE  
DIN 2501 PN16  
(FORGING)



COUPLING STORZ  
(FORGING)



BLANK CAPS  
(FORGING)



HYDRANT WRENCH  
AND  
COUPLING SPANNER  
(CASTING)



### BS COUPLING

BS COUPLING  
MULTI SERRSTED



BS COUPLING  
DOUBLE ACTION



BS COUPLING  
RIB-TAIL



BS COUPLING  
DOUBLE ACTION





# IMEN TIAR

I . T . E

Engineering Co.

WITH IMEN TIAR

THERE IS NO CHANCE FOR FIRE

## IMEN TIAR FITTINGS CATALOGUE

### ADAPTORS

BS ADAPTOR  
MALE-THREAD



BS ADAPTOR  
FEMALE-THREAD



BS ADAPTOR  
MALE-MALE



BS ADAPTOR  
MALE-FEMALE



BS ADAPTOR  
FEMALE-FEMALE



BS ADAPTOR  
FLANGE-FEMALE



BS ADAPTOR  
FLANGE-BSRT



BS ADAPTOR  
STORZ ADAPTOR



### CAPS

BS CAP  
FEMALE



BS CAP  
MALE



BS CAP  
BSRT



Address: No. 1, Parvaneh St. Al-E-Ahmad High way, Tehran-Iran. Postal code: 14399-14811  
Telefax: +98-21 88009526- 88009858- 88007731- 88631629- 88631689- 88010726- 88350694- 88350692

E-mail: [info@imentiar.com](mailto:info@imentiar.com)

[www.imentiar.com](http://www.imentiar.com)



# IMEN TIAR

I . T . E

Engineering Co.

WITH IMEN TIAR

THERE IS NO CHANCE FOR FIRE

## **IMEN TIAR ENGINEERING CO. FITTINGS**

Storz adapter is a type of hose-connection that functions similarly to an inner lock and makes connection possible with the aid of its brackets and grooves.

Storz adapters are called either, two-way connection fittings or neutral fittings. A pair of male and female Storz fittings can be attached to each other through their thread; the connection of male-to-male and female-to-female (having equal diameter) is also possible.

The connection of Storz fitting with the aid of its washers makes a firm and leakage-free link for flowing of the water through the hose. For detaching, they should be rotated in opposite directions (One clockwise and the other one counter-clockwise) so that the catches of one fitting would be placed in front of the grooves of the other one, which helps the Storz fittings be easily detached from each other.

Symmetrical male and female couplings make the connection of the hose possible. Working with these fittings is easy. They can quickly be assembled and disassembled and can also be detached from each other by a 120° turn. The most important advantage of Storz fittings is that they can be used in variety of products.

Imen Tiar Engineering Co. produces Storz Adaptors in all common sizes by **forging procedure.**

Using the best Aluminum alloy and after passing T6 treatment (Solution & Aging), our company offers these products with the best quality.

**Imen Tiar Engineering Co. Storz connections (adaptor & coupling) (25-100mm) comply with DIN 14301 and DIN 14302 standards and have achieved to acquire the *Certificate of Compliance* from ECM (CE certificate)-Certificate No.EC.1282.0F150223.ITE0085**



I . T . E

# IMEN TIAR

Engineering Co.

WITH IMEN TIAR

THERE IS NO CHANCE FOR FIRE

## STORZ ADAPTER WITH FEMALE THREAD

**"Forged"**

No Cast Component



### **IMEN TIAR Storz adapters**

Storz adapters are available in the following sizes:

1" , 1½" , 2" , 2½" & 4"



# IMEN TIAR

I . T . E

Engineering Co.

WITH IMEN TIAR

THERE IS NO CHANCE FOR FIRE

## TECHNICAL DATA

MAXIMUM WORKING PRESSURE:	25 Bar (304.5 PSI)
NORMAL WORKING PRESSURE:	7-12 Bar
CONNECTION:	1" , 1½" , 2" , 2½" , 4"
MATERIAL:	Aluminum Alloys/ Copper Alloys

	Size (Inch)	Weight (Kg)	
		Aluminum Alloys	Copper Alloys
<b>WEIGHT (Approx.)</b>	1"	0.095	0.280
	1 ½"	0.210	0.700
	2"	0.350	1.095
	2 ½"	0.505	1.61
	4"	0.95	2.94
<b>FINISHING</b>	AL: Natural Finish / Anodizing Copper: Natural Finish / Anodizing		

### Product specification:

Storz adapters can be used in hydrants, inductors, Nozzles, Monitors, hoses and etc. as fittings. The washer is replaceable and can make a reliable sealing.



# IMEN TIAR

I . T . E

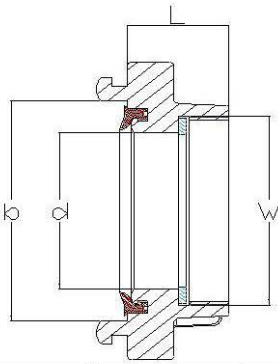
Engineering Co.

WITH IMEN TIAR

THERE IS NO CHANCE FOR FIRE

## STORZ ADAPTER WITH FEMALE THREAD

Part name	Material	Qty.
Storz adapter	Aluminum6061 (ASTM B308 Standard)	1
Flat washer	NBR / EPDM	1
Sealing washer	NBR / EPDM	1



Material
Aluminum Alloys
Copper Alloys

Nominal Size	Lug spacing b	Inside Dia d (mm)	Female Thread w (mm)	Face-to-Face Length L(mm)	Weight (Kg)	Indicator No.	Maximum working pressure	Remarks
25	31	18	G 1	30	0.095	AS 25 F 1	25 bar	-
<b>25</b>	<b>31</b>	<b>18</b>	<b>G 1</b>	<b>30</b>	<b>0.280</b>	<b>AS 25 F 1</b>	<b>25 bar</b>	-
38	51	32	G 1 1/2	35	0.210	AS 38 F 1 1/2	25 bar	-
<b>38</b>	<b>51</b>	<b>32</b>	<b>G 1 1/2</b>	<b>35</b>	<b>0.700</b>	<b>AS 38 F 1 1/2</b>	<b>25 bar</b>	-
52	66	44	G 2	40	0.350	AS 52 F 2	25 bar	-
<b>52</b>	<b>66</b>	<b>44</b>	<b>G 2</b>	<b>40</b>	<b>1.095</b>	<b>AS 52 F 2</b>	<b>25 bar</b>	-
65	81	58	G 2 1/2	35	0.505	AS 65 F 2 1/2	25 bar	-
<b>65</b>	<b>81</b>	<b>58</b>	<b>G 2 1/2</b>	<b>35</b>	<b>1.61</b>	<b>AS 65 F 2 1/2</b>	<b>25 bar</b>	-
100	115	100	G 4	48	0.95	AS 100 F 4	25 bar	-
<b>100</b>	<b>115</b>	<b>100</b>	<b>G 4</b>	<b>48</b>	<b>2.94</b>	<b>AS 100 F 4</b>	<b>25 bar</b>	-



# IMEN TIAR

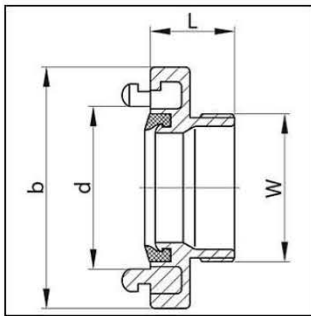
I . T . E

Engineering Co.

WITH IMEN TIAR

THERE IS NO CHANCE FOR FIRE

## STORZ ADAPTER WITH MALE THREAD



Material	
	Aluminum Alloys
	Copper Alloys



Nominal Size	Lug spacing b (mm)	Face to face Length L (mm)	Inside Diad (mm)	Male thread W	Weight (Kg)	Indicator No.	Maximum working pressure	Maximum testing pressure
25	31	30	18	G 1/2	0.210	AMT 1	25 bar	50 bar
25	31	30	18	G 1/2	0.680	AMT 1	25 bar	50 bar
25	31	30	18	G 1	0.075	AMT 1	25 bar	50 bar
25	31	30	18	G 1	0.228	AMT 1	25 bar	50 bar
38	51	33	32	G 1 1/2	0.135	AMT 1 1/2	25 bar	50 bar
38	51	33	32	G 1 1/2	0.408	AMT 1 1/2	25 bar	50 bar
52	66	56	45	G 1 1/2	0.252	AMT 2	25 bar	50 bar
52	66	56	45	G 1 1/2	0.756	AMT 2	25 bar	50 bar
52	66	32	45	G 2	0.252	AMT 2	25 bar	50 bar
52	66	32	45	G 2	0.756	AMT 2	25 bar	50 bar
65	81	42	55	G 2	0.335	AMT 2 1/2	25 bar	50 bar
65	81	42	55	G 2	0.955	AMT 2 1/2	25 bar	50 bar
65	81	41	55	G 2 1/2	0.370	AMT 2 1/2	25 bar	50 bar
65	81	41	55	G 2 1/2	0.909	AMT 2 1/2	25 bar	50 bar
100	115	74	90	G 4	1.038	AMT 4	25 bar	50 bar
100	115	74	90	G 4	3.114	AMT 4	25 bar	50 bar

Finishing: AL: Natural Finish / Anodizing  
Copper: Natural Finish / Anodizing

Maximum Operating Temperature: 80 °C





# IMEN TIAR

I . T . E

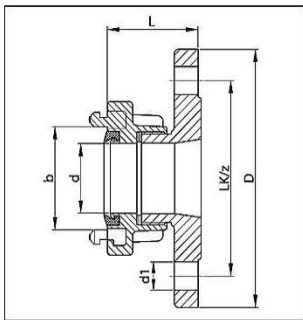
Engineering Co.

WITH IMEN TIAR

THERE IS NO CHANCE FOR FIRE

## STORZ ADAPTER – TO FLANGE

### DIN 2501 PN16



Material	
	Aluminum Alloys
	Copper Alloys



Nominal Size	Lug spacing b (mm)	Inside dia. d (mm)	Face to face Length (mm)	Flange-dia D (mm)	LK/z (mm)	Hole dia. (mm)	Weight (Kg)	Indicator No.
25	31	18	65	115	85/4	14	0.450	ASF 1
52	66	44	63	165	125/4	18	1.100	ASF 2
<b>52</b>	<b>66</b>	<b>44</b>	<b>63</b>	<b>165</b>	<b>125/4</b>	<b>18</b>	<b>2.875</b>	<b>ASF 2</b>
65	81	58	70	185	145/4	18	1.400	ASF 2 1/2
100	115	89	75	220	180/8	18	2.400	ASF 4



# IMEN TIAR

I . T . E

Engineering Co.

WITH IMEN TIAR

THERE IS NO CHANCE FOR FIRE

## **STORZ COUPLING**

**"Forged"**  
No Cast Component



Imen Tiar Engineering Co. produces Storz Adaptors in all common sizes by **forging procedure.**

Using the best Aluminum alloy and after passing T6 treatment (Solution & Aging), our company offers these products with the best quality.

### **IMEN TIAR Storz Couplings**

Storz adaptors are available in the following sizes:

**1" , 1½" , 2" , 2½" & 4"**



# IMEN TIAR

I . T . E

Engineering Co.

WITH IMEN TIAR

THERE IS NO CHANCE FOR FIRE

## STORZ COUPLING

### TECHNICAL DATA

MAXIMUM WORKING PRESSURE:	25 Bar (304.5 PSI)
NORMAL WORKING PRESSURE:	7-12 Bar
CONNECTION:	1" , 1½" , 2" , 2½" , 4"
MATERIAL:	Aluminum Alloys/ Copper Alloys

WEIGHT (Approx.)	Size (Inch)	Weight (Kg)	
		Aluminum Alloys	Copper Alloys
	1"	0.080	0.235
	1 ½"	0.175	0.576
	2"	0.120	0.320
	2 ½"	0.361	1.19
	4"	1.08	3.56
<b>FINISHING</b>	AL: Natural Finish / Anodizing Copper: Natural Finish / Anodizing		

### Product specification

Storz adapters can be used in hydrants, inductors and hoses as fittings.

The washer is replaceable and can make a reliable sealing.

Part name	Material	Qty.
Storz adapter	Aluminum6061 (ASTM B308 Standard)	1
Flat washer	NBR / EPDM	1
Sealing washer	NBR / EPDM	1



# IMEN TIAR

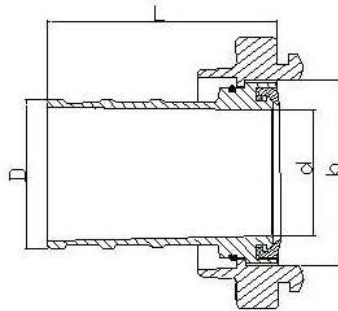
I . T . E

Engineering Co.

WITH IMEN TIAR

THERE IS NO CHANCE FOR FIRE

## STORZ COUPLING



Material	
	Aluminum Alloys
	Copper Alloys

Nominal Size	Lug spacing b (mm)	hose D (mm)	Length Tail piece L (mm)	Inside Diad (mm)	Weight (Kg)	Indicator No.	Maximum working pressure	Maximum testing pressure
25	31	25	60	18	0.080	CS 25 F 1	25 bar	50 bar
<b>25</b>	<b>31</b>	<b>25</b>	<b>60</b>	<b>18</b>	<b>0.235</b>	<b>CS 25 F 1</b>	<b>25 bar</b>	<b>50 bar</b>
38	51	38	90	30	0.175	CS 38 F 1 1/2	25 bar	50 bar
<b>38</b>	<b>51</b>	<b>38</b>	<b>90</b>	<b>30</b>	<b>0.576</b>	<b>CS 38 F 1 1/2</b>	<b>25 bar</b>	<b>50 bar</b>
52	66	52	90	45	0.120	CS 52 F 2	25 bar	50 bar
<b>52</b>	<b>66</b>	<b>52</b>	<b>90</b>	<b>45</b>	<b>0.320</b>	<b>CS 52 F 2</b>	<b>25 bar</b>	<b>50 bar</b>
65	81	65	100	55	0.361	CS 65 F 2 1/2	25 bar	50 bar
<b>65</b>	<b>81</b>	<b>65</b>	<b>100</b>	<b>55</b>	<b>1.19</b>	<b>CS 65 F 2 1/2</b>	<b>25 bar</b>	<b>50 bar</b>
100	115	101	170	90	1.08	CS 100 F 4	25 bar	50 bar
<b>100</b>	<b>115</b>	<b>101</b>	<b>170</b>	<b>90</b>	<b>3.56</b>	<b>CS 100 F 4</b>	<b>25 bar</b>	<b>50 bar</b>

Finishing: AL: Natural Finish / Anodizing

Copper: Natural Finish / Anodizing

Maximum Operating Temperature: 80 °C



# IMEN TIAR

I . T . E

Engineering Co.

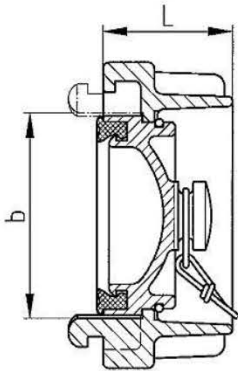
WITH IMEN TIAR

THERE IS NO CHANCE FOR FIRE

## BLANK CAP

Blank Caps are used to shut the flow of water in Storz couplings, which are connected to the hydrants. IMEN TIAR Engineering Co. produces Blank Cap in all common size by **forging process**.

Using best Aluminum alloy and after passing T6 treatment (Solution & Aging), our company offers these products with the best quality.



Material
Aluminum Alloys
Copper Alloys



Nominal Size	Lug spacing b (mm)	Face to face Length L (mm)	Weight (Kg)	Indicator No.
25	31	28	0.115	BC 1
<b>25</b>	<b>31</b>	<b>28</b>	<b>0.318</b>	BC 1
38	51	35	0.195	BC 1 1/2
<b>38</b>	<b>51</b>	<b>35</b>	<b>0.580</b>	BC 1 1/2
52	66	43	0.390	BC 2
<b>52</b>	<b>66</b>	<b>43</b>	<b>1.115</b>	BC 2
65	81	34	0.410	BC 2 1/2
<b>65</b>	<b>81</b>	<b>34</b>	<b>1.110</b>	BC 2 1/2
100	115	45	0.750	BC 4
<b>100</b>	<b>115</b>	<b>45</b>	<b>2.280</b>	BC 4

**Finishing:** AL: Natural Finish / Anodizing  
Copper: Natural Finish / Anodizing

**Maximum Operating Temperature:** 80 °C



## HYDRANT WRENCH AND COUPLING SPANNER



Coupling Spanners and Hydrant wrenches are used to open or close couplings, adapters and hydrants. The shape of the spanners allows the complete connection of two couplings up to the stop. In addition, they provide enough torque to open the pipe connections that have been left untouched for many years.

Nominal Size	Length (mm)	Width (mm)	Height (mm)	Weight (Kg)	Indicator No.
25	31	18	65	0.115	SP 1
52	66	44	63	0.165	SP 2
<b>52</b>	<b>66</b>	<b>44</b>	<b>63</b>	<b>0.165</b>	<b>SP 2</b>
65	81	58	70	0.185	SP 2 1/2
100	115	89	75	0.220	SP 4



# IMEN TIAR

I . T . E

Engineering Co.

WITH IMEN TIAR

THERE IS NO CHANCE FOR FIRE

## BS COUPLINGS REF STANDARD: BS336

The fire fittings consist of three groups of coupling, adaptor and cap with various sizes from 1½" to 5". These products are made of Copper alloy (Brass/Gunmetal) or Al alloy material according to BS336 or BSRT standard.

<b>COUPLINGS</b>							
		<b>TR-HC-1</b>		<b>TR-HC-1</b>			
Tail Size (Inch)		1 ½" , 1 ¾" 2 ½" , 2 ¾"		1 ½" , 1 ¾" 2 ½" , 2 ¾"			
Locking System		Single actions		Double actions			
Tail Type		Multi-serrated/Rib-tail		Multi-serrated/Rib-tail			
Type		2 ½" , Instantaneous		2 ½" , Instantaneous			
Body Material		Al Alloy, Brass, Gunmetal		Al Alloy, Brass, Gunmetal			
<b>ADAPTORS</b>							
		<b>BSS</b>		<b>BSRT</b>		<b>BSP</b>	
		<b>M</b>	<b>F</b>	<b>M</b>	<b>F</b>	<b>M</b>	<b>F</b>
		<b>INDICATOR CODE</b>					
<b>BSS</b>	<b>M</b>	100	105	110	115	120	125
	<b>F</b>	105	150	155	160	165	170
<b>BSRT</b>	<b>M</b>	110	155	200	205	210	215
	<b>F</b>	115	160	205	240	245	250
<b>BSP</b>	<b>M</b>	120	165	210	245	275	280
	<b>F</b>	125	170	215	250	280	305
<b>STORZ</b>		140	185	230	265	295	320
<b>FLANGE</b>		145	190	235	270	300	325
<b>CAPS</b>							
BS 2 1/2" Male, blank cap							
BS 2 1/2" Female, blank cap Sing Release							
BSRT cap							
Hydrant Cap							



# IMEN TIAR

I . T . E

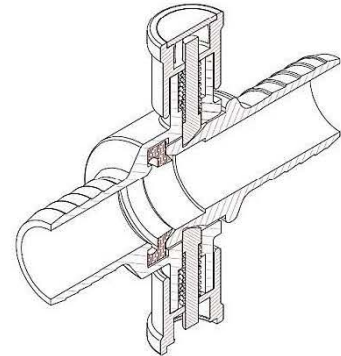
Engineering Co.

WITH IMEN TIAR

THERE IS NO CHANCE FOR FIRE

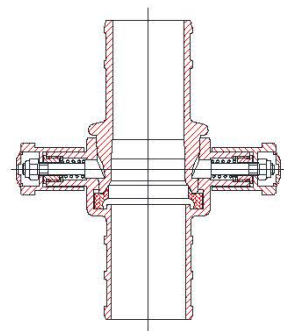
## COUPLINGS

### BS COUPLING MULTI-SERRATED



FOR HOSE (DIN)	NOMINAL SIZE	MATERIAL	WORKING PRESSURE
1 ½" (38)	2 ½"	Brass / Gunmetal / Al	12 bar
1 ¾" (45)	2 ½"	Brass / Gunmetal / Al	12 bar
2 ½" (64)	2 ½"	Brass / Gunmetal / Al	12 bar
2 ¾" (70)	2 ½"	Brass / Gunmetal / Al	12 bar

### BS COUPLING MULTI-SERRATED



FOR HOSE (DIN)	NOMINAL SIZE	MATERIAL	WORKING PRESSURE
1 ½" (38)	2 ½"	Brass / Gunmetal / Al	12 bar
1 ¾" (45)	2 ½"	Brass / Gunmetal / Al	12 bar
2 ½" (64)	2 ½"	Brass / Gunmetal / Al	12 bar
2 ¾" (70)	2 ½"	Brass / Gunmetal / Al	12 bar





# IMEN TIAR

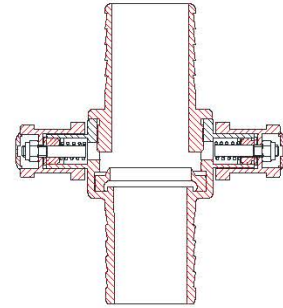
I . T . E

Engineering Co.

WITH IMEN TIAR

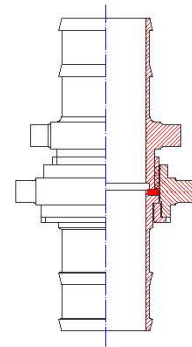
THERE IS NO CHANCE FOR FIRE

## BS COUPLING DOUBLE ACTION



FOR HOSE (DIN)	NOMINAL SIZE	MATERIAL	WORKING PRESSURE
1 ½" (38)	2 ½"	Brass / Gunmetal / Al	12 bar
1 ¾" (45)	2 ½"	Brass / Gunmetal / Al	12 bar
2 ½" (64)	2 ½"	Brass / Gunmetal / Al	12 bar
2 ¾" (70)	2 ½"	Brass / Gunmetal / Al	12 bar

## BS COUPLING 4" BSRT



FOR HOSE (DIN)	NOMINAL SIZE	MATERIAL	WORKING PRESSURE
3"	3"	Brass / Gunmetal / Al	12 bar
4"	4"	Brass / Gunmetal / Al	12 bar
4 ½"	4 ½"	Brass / Gunmetal / Al	12 bar
5 ½"	5 ½"	Brass / Gunmetal / Al	12 bar

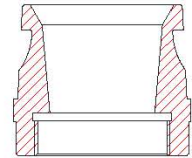
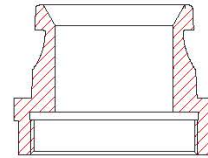


## ADAPTORS

### BS ADAPTOR

#### MALE-FEMALE THREAD

#### INDICATOR CODE: 105

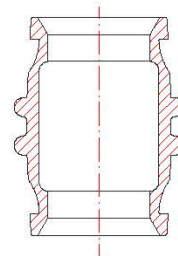


NOMINAL SIZE	MATERIAL	WORKING PRESSURE
1 ½"	Al / Al-Bronze / Bronze	12 bar
2"	Al / Al-Bronze / Bronze	12 bar
2 ½"	Al / Al-Bronze / Bronze	12 bar
3"	Al / Al-Bronze / Bronze	12 bar

### BS ADAPTOR

#### MALE-MALE

#### INDICATOR CODE: 100



NOMINAL SIZE	MATERIAL	WORKING PRESSURE
2 ½"	Al / Al-Bronze / Bronze	12 bar



# IMEN TIAR

I . T . E

Engineering Co.

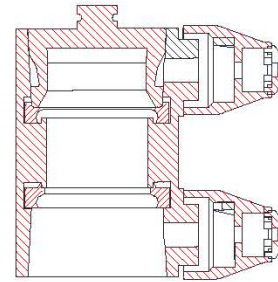
WITH IMEN TIAR

THERE IS NO CHANCE FOR FIRE

## BS ADAPTOR

**FEMALE-FEMALE**

**INDICATOR CODE: 150**



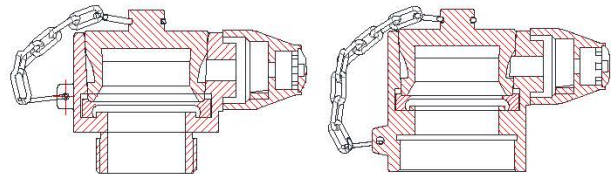
NOMINAL SIZE	MATERIAL	WORKING PRESSURE
2 ½" - 2 ½"	Al / Al-Bronze / Bronze	12 bar

## BS ADAPTOR

**FEMALE-THREAD**

**MALE-THREAD**

**INDICATOR CODE: 150 / 150**



NOMINAL SIZE	MATERIAL	WORKING PRESSURE
1 ½"	Al / Al-Bronze / Bronze	12 bar
2"	Al / Al-Bronze / Bronze	12 bar
2 ½"	Al / Al-Bronze / Bronze	12 bar
3"	Al / Al-Bronze / Bronze	12 bar



# IMEN TIAR

I . T . E

Engineering Co.

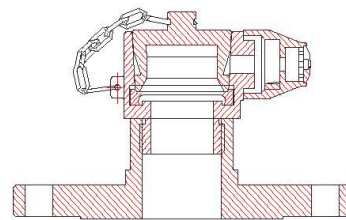
WITH IMEN TIAR

THERE IS NO CHANCE FOR FIRE

## BS ADAPTOR

### FLANGE-FEMALE

INDICATOR CODE: 190

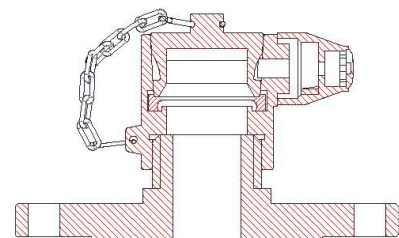


NOMINAL SIZE	FLANGE SIZE	MATERIAL	WORKING PRESSURE
2 ½"	1 ½" , 2" , 2 ½" , 4"	Bronze / Al-Bronze	12 bar

## BS ADAPTOR

### FLANGE-MALE

INDICATOR CODE: 145



NOMINAL SIZE	FLANGE SIZE	MATERIAL	WORKING PRESSURE
2 ½"	1 ½" , 2" , 2 ½" , 4"	Bronze / Al-Bronze	12 bar



# IMEN TIAR

I . T . E

Engineering Co.

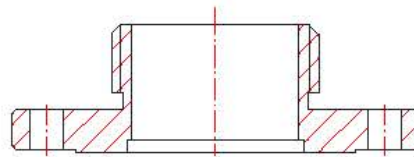
WITH IMEN TIAR

THERE IS NO CHANCE FOR FIRE

## **BS ADAPTOR**

### **FLANGE-BSRT**

**INDICATOR CODE: 235**

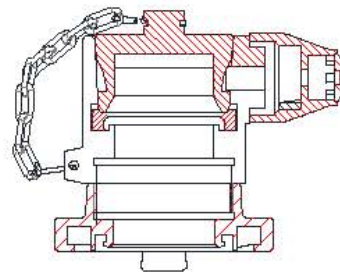


FLANGE SIZE	THREAD	MATERIAL	WORKING PRESSURE
4" , 6"	4" , 4 ½" , 5" , 5 ½"	Bronze / Al-Bronze / D. Cast Iron	12 bar

## **BS ADAPTOR**

### **STORZ ADAPTOR**

**INDICATOR CODE: 185**



BS ADAPTOR		STORZ ADAPTOR		WORKING PRESSURE
Nominal Size	Material	Nominal Size	Material	
2 ½"	Al-Bronze	1 ½" , 2 ½"	Al 6061 / Brass	12 bar



# IMEN TIAR

I . T . E

Engineering Co.

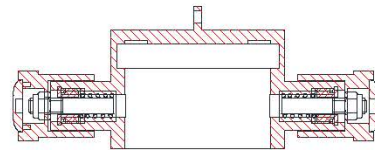
WITH IMEN TIAR

THERE IS NO CHANCE FOR FIRE

## CAPS

### BS CAP

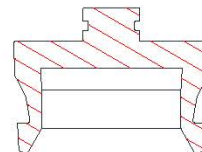
### FEMALE



NOMINAL SIZE	MATERIAL	WORKING PRESSURE
2 ½"	Al / Al-Bronze / Bronze	12 bar

### BS CAP

### MALE



NOMINAL SIZE	MATERIAL	WORKING PRESSURE
2 ½"	Al / Al-Bronze / Bronze / ABS	12 bar



# IMEN TIAR

I . T . E

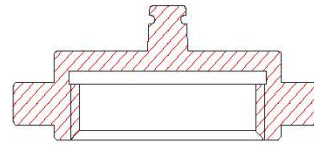
Engineering Co.

WITH IMEN TIAR

THERE IS NO CHANCE FOR FIRE

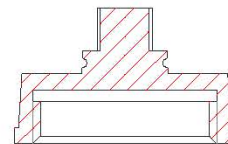
## BS CAP

### BSRT



NOMINAL SIZE	MATERIAL	WORKING PRESSURE
4"	D. Cast Iron / Bronze	12 bar
4 ½"	D. Cast Iron / Bronze	12 bar
5"	D. Cast Iron / Bronze	12 bar
5 ½"	D. Cast Iron / Bronze	12 bar

## HYDRANT CAP



NOMINAL SIZE	MATERIAL	WORKING PRESSURE
4"	D Cast Iron / Bronze	12 bar
4 ½"	D Cast Iron / Bronze	12 bar
5"	D Cast Iron / Bronze	12 bar
5 ½"	D Cast Iron / Bronze	12 bar



Address: No. 1, Parvaneh St. Al-E-Ahmad High way, Tehran-Iran.

Postal code: 14399-14811

Telefax: +98-21 88009526- 88009858- 88007731- 88631629- 88631689- 88010726- 88350694- 88350692

E-mail: [info@imentiar.com](mailto:info@imentiar.com)

[www.imentiar.com](http://www.imentiar.com)