

**WITH IMEN TIAR THERE IS NO CHANCE FOR FIRE**

# IMEN TIAR

Engineering Co.



Certificate CH03.0256  
ISO 9001 : 2008



I.T.E



## **Introduction:**

Imen Tiar Engineering Company was established in 1999 and today is as a main manufacturer and supplier of fire fighting equipment.

The main activities of this company are:

- 1) Produce the safety and fire fighting equipments.
- 2) Design and install the fire fighting systems.
- 3) Service and maintenance of the fire fighting systems.
- 4) After sales service department.

This company has the ISO 9001:2008 Certificate for Fire Fighting Equipment.



Producer of Fire Fighting & Safety Equipments



# HYDRANT

● **Dry Barrel Pillar Hydrant:**

These hydrants are usually used in the cold areas and made according to AWWA-C502 standard.

Desc.	Model	TR-PH-D1	TR-PH-D2	TR-PH-D3	TR-PH-D4
Inlet Connection		6" or 8"	4" or 6"	2 1/2"	4"
Hose Nozzle (2 1/2") No.		1,2	1,2	1	1,2,3
Pumper Connection		4", 4 1/2", 5"	4" , 4 1/2"	-----	4"



| TR-PH-D1 |



| TR-PH-D2 |



| TR-PH-D3 |

● **Under Ground Hydrant:**

These hydrants are made according to BS 750 – type 2 standard and have one 2 1/2" outlet and one 3" inlet.



| TR-PH-UH1 |



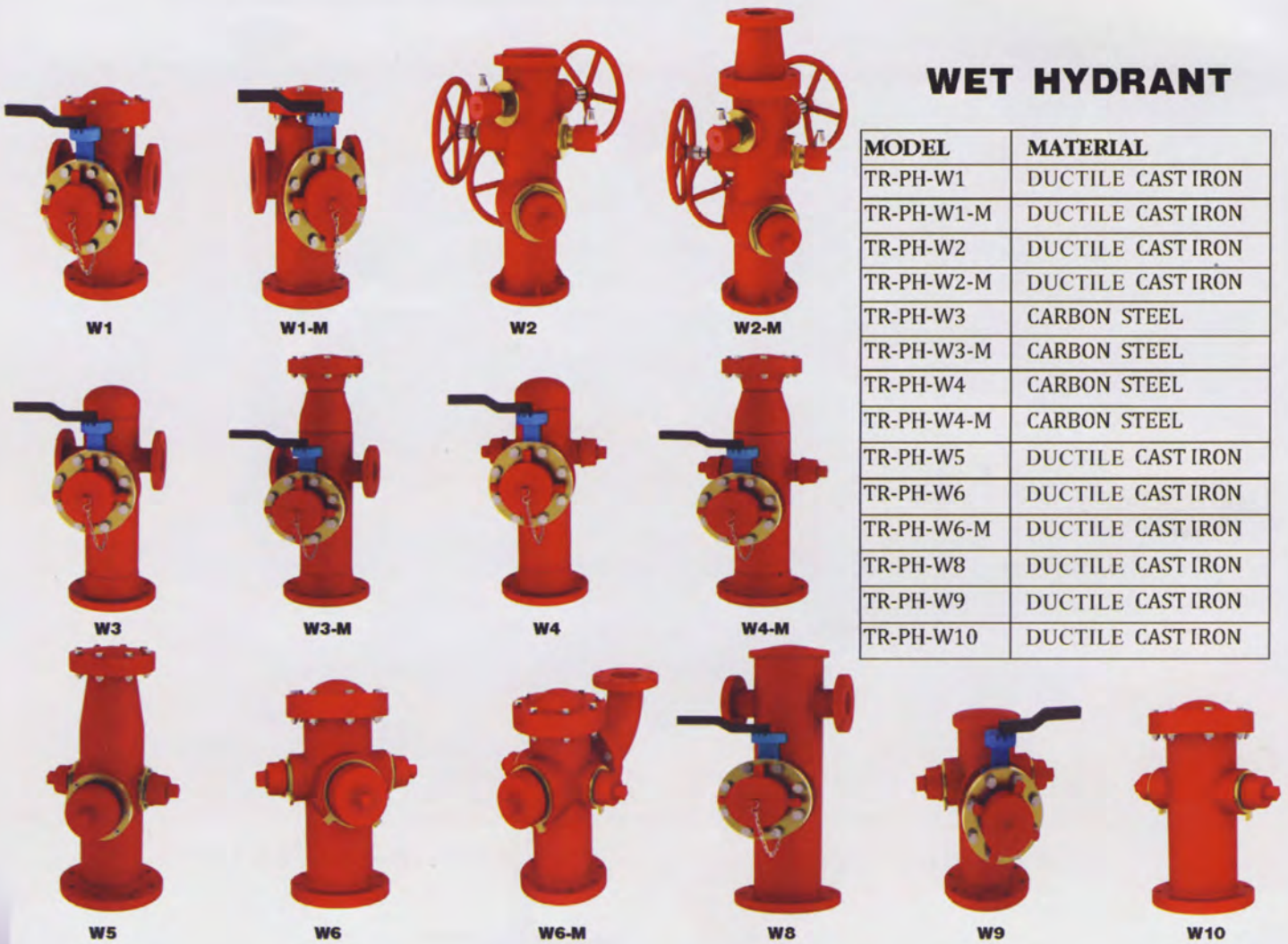
| TR-PH-UH2 |



# HYDRANT

● **Wet Barrel Pillar Hydrant:**

These types of hydrants are usually used in the tropical areas and made according to AWWA – C503 standard. These hydrants have two, three or four outlets and the inlet connection size of them is 4" or 6".



## WET HYDRANT

MODEL	MATERIAL
TR-PH-W1	DUCTILE CAST IRON
TR-PH-W1-M	DUCTILE CAST IRON
TR-PH-W2	DUCTILE CAST IRON
TR-PH-W2-M	DUCTILE CAST IRON
TR-PH-W3	CARBON STEEL
TR-PH-W3-M	CARBON STEEL
TR-PH-W4	CARBON STEEL
TR-PH-W4-M	CARBON STEEL
TR-PH-W5	DUCTILE CAST IRON
TR-PH-W6	DUCTILE CAST IRON
TR-PH-W6-M	DUCTILE CAST IRON
TR-PH-W8	DUCTILE CAST IRON
TR-PH-W9	DUCTILE CAST IRON
TR-PH-W10	DUCTILE CAST IRON



# POST VALVE

These kinds of valves are used for isolating the fire fighting hydrants and are made in two types of indicator and post plate (non-indicator).

Description / Model	TR-PIV	TR-PNIV
Type	Indicator	Non-Indicator
Barrel type	Fix / Telescoping	Fix / Telescoping
Valve type	Gate / Butterfly	Gate / Butterfly
Valve size	3", 4", 6", 8", 10", 12"	3", 4", 6", 8", 10", 12", 14"



| TR-PIV |



| MANHOLE |



| TR-PNIV |



## LANDING VALVE

### ● Globe Valve:

The Globe valves are made of copper alloy material according to BS5041 Part 1 standard.  
The outlet standard of these valves is BS 336 Instantaneous or storz.

Desc. / Model	SG 1	SG 3	SG 5	SG 7	SG 9
	SG 2	SG 4	SG 6	SG 8	SG 10
Outlet Type	Horizontal	Bib-nose	Oblique	Horizontal	Bib-nose
Inlet Type	Flange Thread	Flange Thread	Flange Thread	Flange Thread	Flange Thread
Valve type	Straight	Straight	Angle	"S" type	"S" type



|TR-SG1|



|TR-SG2|



|TR-SG3|



|TR-SG4|



|TR-SG5|



|TR-SG6|



|TR-SG7|



|TR-SG8|



|TR-SG9|



|TR-SG10|



## LANDING VALVE

### ● Pressure Regulator valve:

Because of probable changes of the outlet pressure of the valves that can injure the fire fighter, this type of valve is designed to arrange and fix the outlet pressure of valve (for example 7 bar).

These valves can be fitted to any BS 5041 globe valve.



| TR - PRV 1 |



| TR - PRV 2 |

### ● Gate Valve:

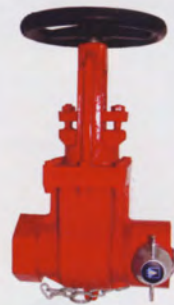
The Gate valves are made of copper alloy material and according to BS5041 Part 2 standard.

The outlet standard of these valves is BS 336 or storz.

Desc.	TR-GT1	TR-GT3	TR-GT5
	TR-GT2	TR-GT4	TR-GT6
Model			
Stem type	OS & y	NRS	RS
Inlet type	Flange Thread	Flange Thread	Flange Thread



| TR-GT1 |



| TR-GT2 |



| TR-GT3 |



| TR-GT4 |



| TR-GT5 |



| TR-GT6 |



## MONITOR

There are various kinds of monitors are made in Imen Tiar Company for water and foam services.

Desc. Model	TR-MW1	TR-MW2	TR-MW3	TR-MW4	TR-MW5	TR-MW6	TR-MW7
Type	Portable	Fix	Fix	Fix	Fix	Fix	Fix
Operating system	Single Wheel	Double Wheel	Handel	Chain	Handel	Handel	Handel
Inlet size	2 x 2 1/2"	4"	4"	4"	3" , 4"	4"	4"
Capacity (LPM)	1300-2000	1800-2700	1800-2700	1800-2700	1800-2700	2700-3800	1300-2000



| TR-MW1 |



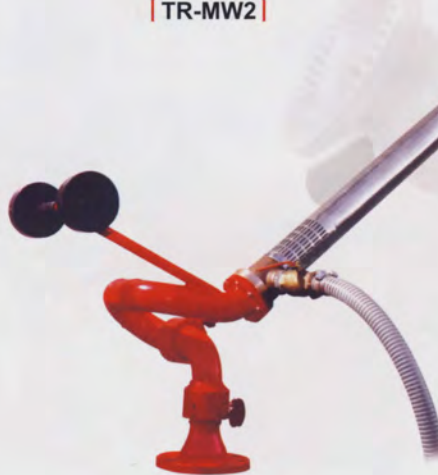
| TR-MW2 |



| TR-MW3 |



| TR-MW4 |



| TR-MW5 |



| TR-MW7 |



## SPECIAL MONITOR

Desc. Model	TR-JM1	TR-WMW5	TR-OSM	TR-FMWI (Foam water Monitor)	TR-RCMI (Remote control Monitor)
Type	Portable	Wheeled	Hydraulic Actuator	Fix	Electrical Actuator
Inlet Size	2 x 2 1/2"	2 x 2 1/2"	Flange 3" or 4"	Flange 4"	Flange 3" or 4"
Capacity (LPM)	1600	2000	1800 to 3600	1800 to 3600	1800 to 3600
Service	Water /Foam	Water	Water	Water & Foam	Water & Foam



**| TR-OSM |**  
Self Oscillating Monitor



**| TR-WMW5 |**  
Wheeled Monitor



**| TR-JM-1 |**  
Jet Master Monitor



**| TR-RCMI |**  
Remote Control Monitor



**| TR-FMWI |**  
Foam water Monitor



## TRAILER MONITOR

Desc. Model	TR-TM1	TR-TM2	TR-TM4	TR-TM7
Type	Trailer	Trailer with tank	Trailer with tank	Trailer
Inlet Size	4 x 2 1/2"	4 x 2 1/2"	4 x 2 1/2"	4 x 4"
Capacity (LPM)	1800 to 3600	1800 to 3600	1800 to 3600	6000 to 11000
Service	Water & Foam	Water & Foam	Water & Foam	Water & Foam
Foam tank / Material	.....	1000 lit / S.S	2000 lit / GRP	.....



| TR-TM1 |  
Trailer Monitor



| TR-TM2 |  
Trailer Monitor with foam tank



| TR-TM7 |  
Trailer Monitor



| TR-TM4 |  
Trailer Monitor with foam tank



## FOAM EQUIPMENT

### a) Mobile Foam Unit

Descr.	Model	TR-MF-U1	TR-MF-U2
Type		Mobile	Mobile
Foam tank capacity		120 lit	200 lit
Foam tank material		GRP	GRP



|TR-MF-U1|



|TR-MF-U2|

### b) MFG

A mechanically-produced fire fighting foam consists essentially of water and a stable foaming agent (or foam compound) which together form the continuous phase of the foam and air, that disperse phase. Inline Mechanical Foam Generator is modified version of Inline Inductor. It inducts foam as well as expands it and also transports the foam a long distance.



|MFG|

### c) Inline – Inductor

This product is made of AL-Alloy / gunmetal material and with BS 336 or Storz Inlet /Outlet standard. Induction rate of these inline-inductors is 3% and 6%.

Descr.	Model	TR ILI 225	TR ILI 450	TR ILI 900
Capacity		225	450	900

Descr.	Model	TR IED 225	TR IED 450
Capacity		225	450



|TR-ILI 450|  
Inline - Inductor



|TR-IED 450|  
Inline - Educator

### d) Foam Nozzle

These nozzles are made of Al – Alloy / Stainless steel material and with BS 336 or Storz Inlet standard.

Descr.	Model	TR-AFN 225	TR-SFN 225	TR-AFN 450	TR-SFN 450	TR-AFN 900	TR-SFN 900
Type 1		Simple	Simple	Simple	Simple	Simple	Simple
Type 2		Self inducing	Self inducing	Self inducing	Self inducing	Self inducing	Self inducing
Capacity		225	225	450	450	900	900
Body material		Al - Alloy	Stainless Steel	Al - Alloy	Stainless Steel	Al - Alloy	Stainless Steel



|TR-AFN 450 (Simple type)|



|TR-AFN 450 (Self inducing)|



|TR-SFN 450 (Simple)|

IMEN TIAR TR-FNM Nozzles produce medium expansion foam, which is effective for fire fighting applications. That is lightweight and GRP construction unique features include:

- Low pressure performance (ideal for use with portable educators)
- High volumes of finished foam
- Rapid fire or spill coverage
- Reduced water usage

|TR-FNM|  
Foam Nozzle





## FIRE HOSE BOX & HOSE REEL

Desc. Model	HB-W	HR-W
	HB-G	HR-G
Type	Wall Ground	Wall Ground
Size	According to order	According to order
Body material	Steel / S.S / GRP	Steel / S.S



| TR-HB-G1 |



| TR-HB-W1 |



| Fire Hose Reel |



| Fire Hose Reel |



| Fire Hose Reel |



## NOZZLE

**a) Handel type:** These nozzles are the Handel type and made of Gunmetal / Aluminum material. They are used for water service.

Desc. Model	TR-WN-F1	TR-WN-F2	TR-WN-F3	TR-WN-F4
Capacity	900	450	225	100
Operating	Shut off/on – Fog – Jet	Shut off/on – Fog – Jet	Shut off/on – Fog – Jet	Shut off/on – Fog – Jet



| TR-WN-F 1 |



| TR-WN-F 2 |



| TR-WN-F 3 |



| TR-WN-F 4 |

**b) Pistol type:** These nozzles are used for water and foam services. The flow rate of this type of nozzle can be arranged.

Desc. Model	TR-EBK1	TR-EBK2
Capacity	100 to 450	450 to 900
Operating	Shut off/on – Fog – Jet	Shut off/on – Fog – Jet



| TR-EBK 1 |

**c) Fix type:** These nozzles are made of Gunmetal / Aluminum material. They are used for water and foam services in monitor.

Desc. Model	TR-NM1	TR-NM2	TR-NM3	TR-NM4	TR-FN1800	TR-FN2700	TR-FN3600	TR-NFM 2000
Capacity (LPM)	2000	2000	1300	3000	1800	2700	3600	2000
Operating	Shut off/on – Fog – Jet	Fog – Jet	Shut off/on – Fog – Jet	Shut off/on – Fog – Jet	Jet	Jet	Jet	Shut off/on – Fog – Jet
Service	Water	Water	Water	Water	Foam	Foam	Foam	Water & Foam



| TR-NFM 2000 |



| TR-NM 1 |



| TR-NM 2 |



| TR-NM 5 |



| TR-FN 2700 |



## FIRE FITTING

The fire fittings consist of three groups of coupling, adaptor and cap with various sizes from 1 1/2" to 5".  
 These products are made of Copper alloy / Al-alloy material and according to BS 336, Storz or BSRT standard.

### a) Coupling



| BS Copling |  
Multi Serrated



| BS Coupling |  
Rib-Tail



| BS Coupling |  
Double action



| STORZ Coupling |



| BS Coupling |  
4" BS RT

### b) Adaptor



| BS Adaptor |  
Male - Thread



| BS Adaptor |  
Female-Thread



| BS Adaptor |  
Male - Male



| BS Adaptor |  
Male - female



| BS Adaptor |  
female - female



| BS Adaptor |  
Flange-Female



| BS Adaptor |  
Flange - BSRT



| Storz Adaptor |



| BS - Storz Adaptor |

### c) Cap



| Storz Cap |



| BS Cap |  
Female



| BS Cap |  
Male



| BS Cap |  
BSRT



## OTHER EQUIPMENT

### Ejector Pump:

Desc.	Model	TR-EP 1	TR-EP 2	TR-TP 1 Turbo Ejector Pump
Feeding water type		Fire water / Sea water	Fire water / Sea water	Fire water / Sea water
Inlet type & size		BS 336/Storz 2 1/2"	Male ( BS 336/Storz) 2 1/2"	Male ( BS 336/Storz) 2 1/2"
Outlet type & size		Thread 4"	Female ( BS336/Storz) 2 1/2"	Female ( BS336/Storz) 2 1/2"
Body material		Al - Alloy	Al - Alloy	Al - Alloy



### Dividing Breaching:

This product is used for distributing from one feed line over several hose line with 2 or 3 outlets.



### Collecting breaching:

Collecting breaching is used for collecting from several feed hose line (2 to 3 inlet) over one outlet.



### Hose Washer:

This product is used for washing the hose without brushing it. It can be simply connected to a fire hydrant nozzle and guide the water flow to out of the fire hose.



### Hose Roller:

This extremely well designed hose roller is used for rolled the fire hoses without placing stress on your manpower. This causes the outflow of water from fire hoses.



### Hose Binder:

This product is used for binding the couplings (1" to 4") to the fire hoses.

### Water Curtain:

Water curtain is used to make a curtain of water that cools the fire fighter.



### Pressure Gage:

This is used for measure the pressure of middle and end of water line.



### Hydrant Wrench:

This is used opening the hydrant & Pumper Nozzle





## EMERGENCY SAFETY SHOWER & EYE WASH

This company produces various types of Emergency Safety Shower & Eye Wash as below:

Model	Applicatins
TR-ES (General type)	For use in all location for general application.
TR-ES-L (laboratory rang type)	For use in all laboratories and clean indoor areas.
TR-ES-D (Self-Draining type)	For use outdoor in tropical and cold climates where over heading or freezing of contained water is a problem.
TR-ES-IH (Isolated and heated type)	As self – draining type but with isolated and heated Mechanism.
TR-ES-F (Frame Type)	For situations where an emergency shower needs to be totally enclosed.
TR-ES-C (Cabinet type)	This type use where a shower needs to be totally enclosed.
TR-ES-CT (Tank cabinet type)	For use when a constant supply of water can not be guaranteed.
TR-ES-M (Mobile type)	This type use where there is not possibility use fix unit.
TR-ES-P (Portable type)	Portable units for immediate use by industries.



| Safety Shower & Eye Wash |



| Eye Wash |



| Portable Eye Wash |



| Portable Safety shower  
& Eye wash |



| Safety Shower  
& Eye wash |



| Safety shower & Eye wa



## FIRE FIGHTING SYSTEM

### ● Powder Trailer Extinguisher

The dry chemical powder fire fighting Trailer is a rapid intervention one or two-axle trailer designed for effective fire fighting capabilities in high risk areas such as commercial complexes, industrial plants and large establishments.

| Powder Trailer Extinguisher |



### ● Twin-Agent Systems

The twin-agent attack provides the most effective extinguishing and securing capability known for many flammable liquid fires. These self-contained systems utilize nitrogen to charge and expel a combination of dry chemical in one vessel (to extinguish the fire) and the premix foam solution in the other (to blanket the flame-free surface) through the twin hose assembly. Twin agent can be Mounted on vehicles, skid mounts or permanent stations.

| Twin-Agent Systems |



### ● Foam System

#### FIRE FIGHTING FOAM BLADDER TANK

The bladder tank foam proportioning system is used to induce foam concentrates into water system with variable flows and/or pressure.

It is a cylindrical carbon steel pressure vessel containing a flexible polymeric elastomer inner bladder which encapsulates the foam concentrate. This bladder physically separates stored foam concentrate from the water supply. This water pressure causes the bladder to collapse, which then dispenses foam concentrate out through distribution piping and (ultimately) into the ratio controller(s).

| Bladder Tank |



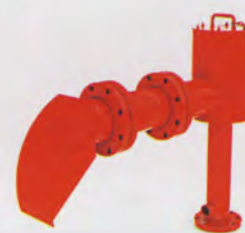
#### FOAM CHAMBER & FOAM POURER

Designed to deliver foam directly onto the surface of flammable or combustible liquid. The foam chambers are installed on flammable liquid storage tanks just below the roof joint. Upon entering the chamber the foam solution is expanded and then discharged against a deflector mounted inside the storage tank. The deflector (or Foam Pourer) directs the foam against the inside wall of the storage tank.

| Foam Pourer |



| Foam Chamber |





## SYSTEMS

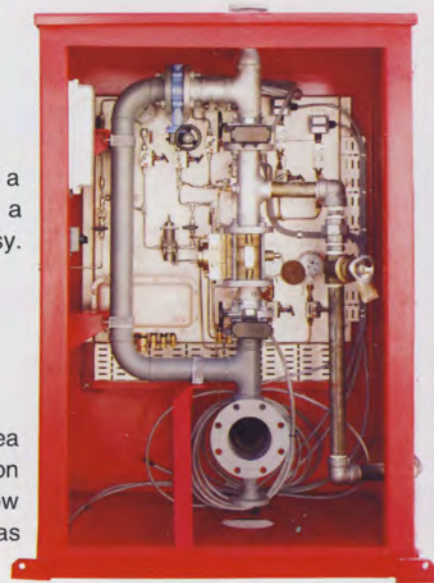
### DELUGE VALVE

Deluge Systems are intended to deliver large quantities of water over a large area in a relatively short period of time. The deluge Valve is compact, and is provided with a preassembled trim - all of which minimize the installation time and make it simple and easy. It opens fast, yet smoothly, preventing water hammer.

This Deluge Valve is designed to allow for a variety of detection and release systems:

- Pneumatic Actuation
- Electric Actuation
- Pneu-Electric Actuation

Deluge systems use open sprinklers or nozzles as discharge outlets in the fire area while preaction systems use closed sprinklers or nozzles. Both systems use separate detection devices to control the operation of the deluge valve. Three simple trim arrangements allow for actuation of the Deluge Valves by manual, pneumatic or electric devices such as break glass stations, wet pilot or dry pilot sprinklers and thermal or smoke detectors.



| Deluge Systems |

### CARBON DIOXIDE FIRE SUPPRESSION SYSTEM

The CO<sub>2</sub> Fire Suppression System is an engineered system available in three application configurations:

Total flooding, local application or hand-hose line. Gaseous carbon dioxide rapidly suppresses fire by a combination of cooling and oxygen displacement. Discharge duration and agent flow rates are customized for the individual application.

CO<sub>2</sub> extinguishes a fire by reducing the oxygen content of the protected area below the point where it can support combustion. Carbon Dioxide Fire extinguishing systems typically store the agent in one of two different ways: in high pressure cylinders, or in low pressure CO<sub>2</sub> tanks.

Carbon Dioxide fire extinguishing systems can be used to protect a wide variety of hazards, from delicate electronic equipment to high-voltage electrical equipment, without danger or damage.



| CO<sub>2</sub> Total Flooding System |

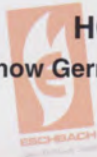


## OTHER SERVICES

This company as well as its products, Supply different type equipment and systems such as kinds of Extinguishers, Hoses, Foams, Automatic Fire Fighting Systems and so on...

### HOSES (ESCHBACH-GERMANY)

ESCHBACH is a well know Germany hose producer and IMEN TIAR Engineering co. as local agent can supply a wide variety hose.



TO WHOM IT MAY CONCERN

#### Letter of Appointment

We herewith appoint IMEN TIAR ENGINEERING NO.1, 1ST FLOOR, PARVANEH AL-E-AHMAD HIGH WAY, TEHRAN, I.R. OF IRAN

to act as our representative for the following products:  
 - Fire Fighting Hoses  
 - Industrial Hoses

The Letter of Appointment authorizes IMEN TIAR ENGINEERING to sell and promote above products.

JAKOB ESCHBACH GMBH  
*(Signature)*  
 (Markus Parsch)



| Synthetic Polydur |



| Synthetic Special 500 |



| Synthetic Special 500 |  
 PU Coating

### EXTINGUISHER (JOCKEL-GERMANY)

JOCKEL as a Famous Germany extinguisher producer also recover many kind of Iranian user need via IMEN TIAR Engineering co. as Iranian Agency.



WE HEREWITH NOTIFY THE COMPANY

IMEN TIAR ENGINEERING CO.  
 NO. 1, 1st Floor, Parvaneh St.  
 14811 Tehran, Iran

BEING OUR REPRESENTATION FOR THE ISLAV IRAN FOR ALL JOCKEL PRODUCTS

FEUERSCUTZ JOCKEL GMBH & CO KG  
 General Manager  
 (Signature)



| Internal Cartridge Extinguisher |



| Stored Pressure Extinguisher |



| Flexible & Mobile Wheeled Extinguishers |





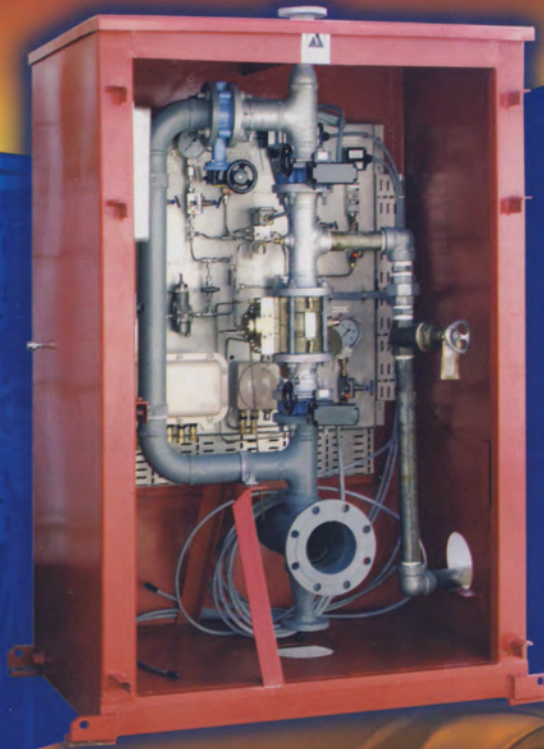
Engineering Co.

# IMEN TIAR

Short Catalogue D



I.T.E



آدرس: تهران، تقاطع بزرگراه جلال آل احمد و چمران، خیابان پروانه، پلاک ۱، طبقه اول  
کد پستی: ۱۴۸۱۱-۱۴۳۹۹

تلفکس: ۸۸۶۳۱۶۸۹ - ۸۸۶۳۱۶۲۹ - ۸۸۰۰۷۷۳۱ - ۸۸۰۰۹۸۵۸ - ۸۸۰۰۹۵۲۶

آدرس کارخانه: نظر آباد، شهرک صنعتی سپهر، بلوار کارآفرینان، خیابان فروردین، بعد از تقاطع رازی،  
کارخانه شرکت مهندسی ایمن تیار تلفن: ۴-۵۳۳۲۴۶۰ (۰۲۶۲)

No. 1, 1th Floor Parvaneh ST. al-e-ahmad High Way

Postal Code 14399 14811 Tehran-IRAN

Tel/Fax: 88631689 - 88631629 - 88007731 - 88009858 - 88009526

E-mail: imentiar@yahoo.com , info@imentiar.com